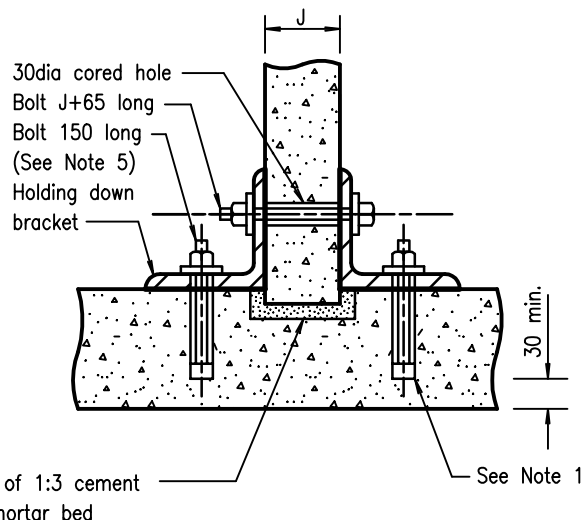
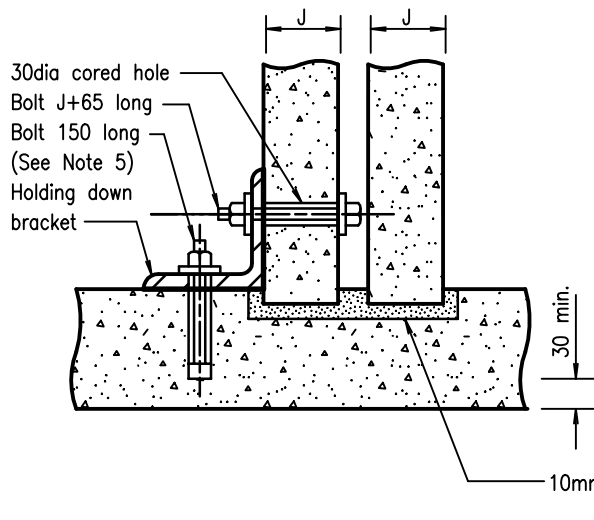
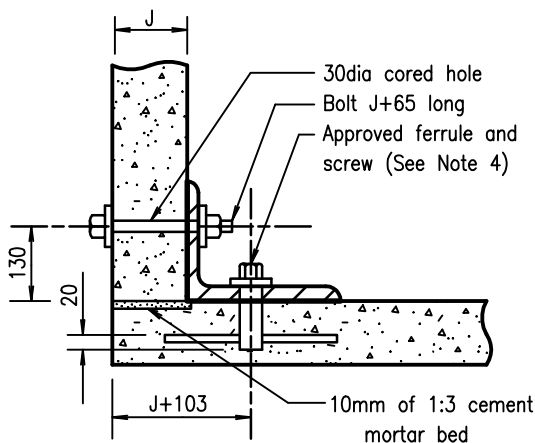


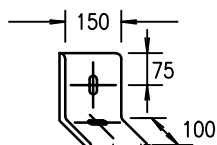
HOLDING DOWN ANCHORS (Bases without recesses)



HOLDING DOWN ANCHORS (Bases with recesses)



PRECAST BASE UNIT



200x200x16 angle with
50x25 slots for bolts,
hot dipped galv. to AS 1650.

HOLDING DOWN BRACKET (N.T.S.)

NOTES:

- BOLTS – hexagonal bolts and screws M20 grade 4.6 to AS 1111 with M20 nuts and washers grade 5 to AS 1112 and AS 1237, hot dipped galvanised to AS 1214.
- STEEL BRACKETS shall be Grade 250 to AS 3679.1.
- BRACKETS to be hot dipped galvanised after fabrication to AS 1650.
- APPROVED MILD STEEL FERRULE with cross bar for use in precast base slabs :
 - length 65, thread depth 32, for P.C. base slabs 80 thick or greater.
 - to take hexagonal screw M20 x 45 to AS 1111.
 - cross holed to take 12 x 250 M.S. bar.
 - ferrule and cross bar to be hot dipped galvanised to AS 1214.
 - ferrule located 300 from ends to match cored holes in crown units. (if precast base slabs are less than 80 thick, the ferrule length, thread depth and screw length are to be reduced in order to maintain clear cover of 15.)
- HOLDING DOWN BOLTS to be placed in drilled 30dia holes and grouted with 1:2 cement sand grout after placing crowns.
- DIMENSIONS are to be in millimetres unless shown otherwise.

ASSOCIATED DOCUMENTS :

- Department of Main Roads Manual of Standard Specifications Roads.
- Department of Main Roads Manual of Standard Drawings Roads.

REFERENCED DOCUMENTS:

Australian Standards:

- AS 1111 ISO Metric Hexagon Commercial Bolts and Screws
- AS 1112 ISO Metric Hexagon Nuts, Including Thin Nuts, Slotted Nuts and Castle Nuts
- AS 1214 Hot-Dip Galvanized Coatings on Threaded Fasteners (ISO metric coarse thread series)
- AS 1237 Flat Metal Washers for General Engineering Purposes (metric series)
- AS 1650 Hot-Dipped Galvanized Coatings on Ferrous Articles
- AS 3679.1 Hot-Rolled Bars and Sections

R C BOX CULVERTS & SLAB LINK BOX CULVERTS

Main Roads

CROWN UNIT HOLDING DOWN ANCHORS

Size A4
Scales
as
shown

Drawing No
1320
Date 10/96

A B